

# SP MANWEB

## Reinforcement to the North Shropshire Electricity Distribution Network



Document Reference: 5.1.9  
Consultation Report  
Figures Document

PINS Reference: EN020021  
Planning Act 37(3)(c)  
November 2018

**SP MANWEB**

**Reinforcement to the North Shropshire Electricity Distribution Network**

**Document Reference: 5.1.9  
Consultation Report  
Figures Document**

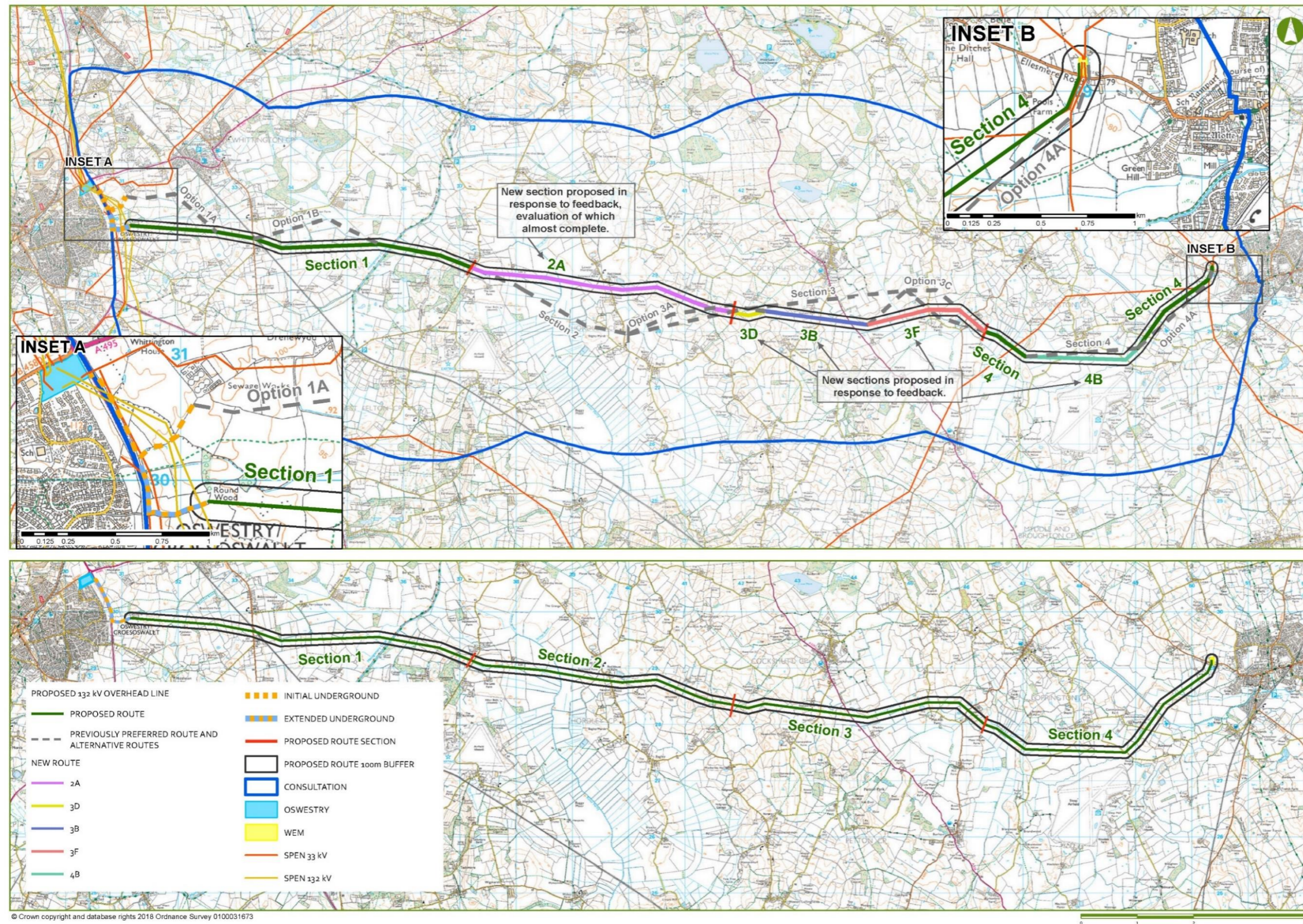
**PINS Reference: EN020021  
Planning Act 37(3)(c)  
November 2018**

*This page is intentionally blank*

## Table of figures

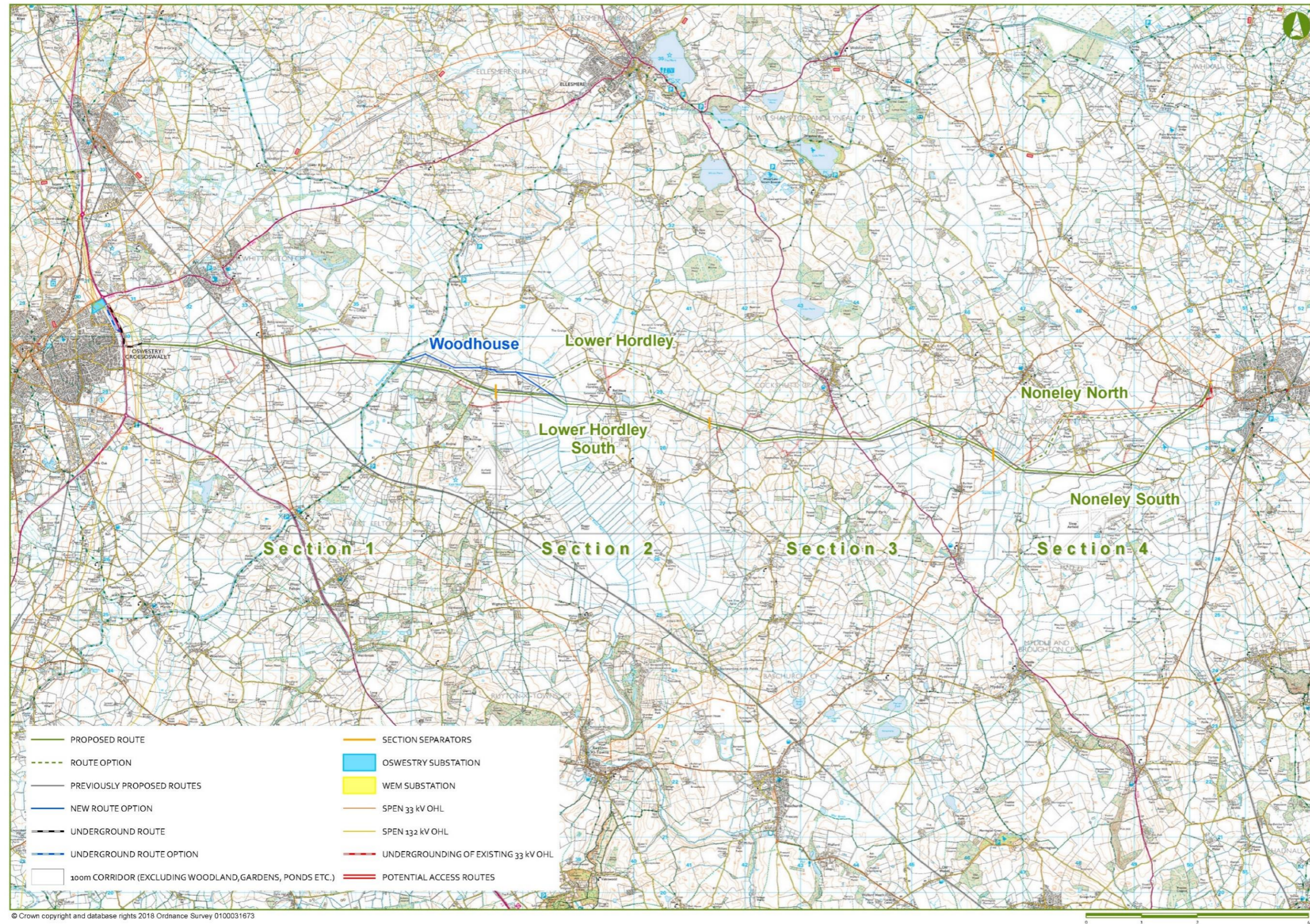
Figure 1-1 – Plan as presented in Project Update 2 (published Nov 2016).....	5
Figure 1-2 – Plan as presented in Project Update 3 (published May 2017) .....	6
Figure 1-3 – Plan showing changes to the proposed development as a result of non-statutory consultation.....	7
Figure 1-4 – Plan as presented in Project Update 4 (published November 2017).....	8
Figure 1-5 – Plan showing changes to the proposed development as a result of statutory consultation.....	9
Figure 9-1 – Plan showing sections used to categorise comments at the statutory consultation .....	10
Figure 11-1 – Plan showing further changes to the proposed development (published November 2018) .....	11

Figure 1-1 – Plan as presented in Project Update 2 (published Nov 2016)



<sup>1</sup> The above plan was published following the close of June – September 2016 period of non-statutory consultation. 'Previously preferred route and alternative routes' refers to the preferred route and alternatives presented in Project Update 1

Figure 1-2 – Plan as presented in Project Update 3 (published May 2017)



<sup>2</sup> The above plan was published in May 2016. 'Previously proposed routes' refers to proposed routes presented in Project Update 2

Figure 1-3 – Plan showing changes to the proposed development as a result of non-statutory consultation

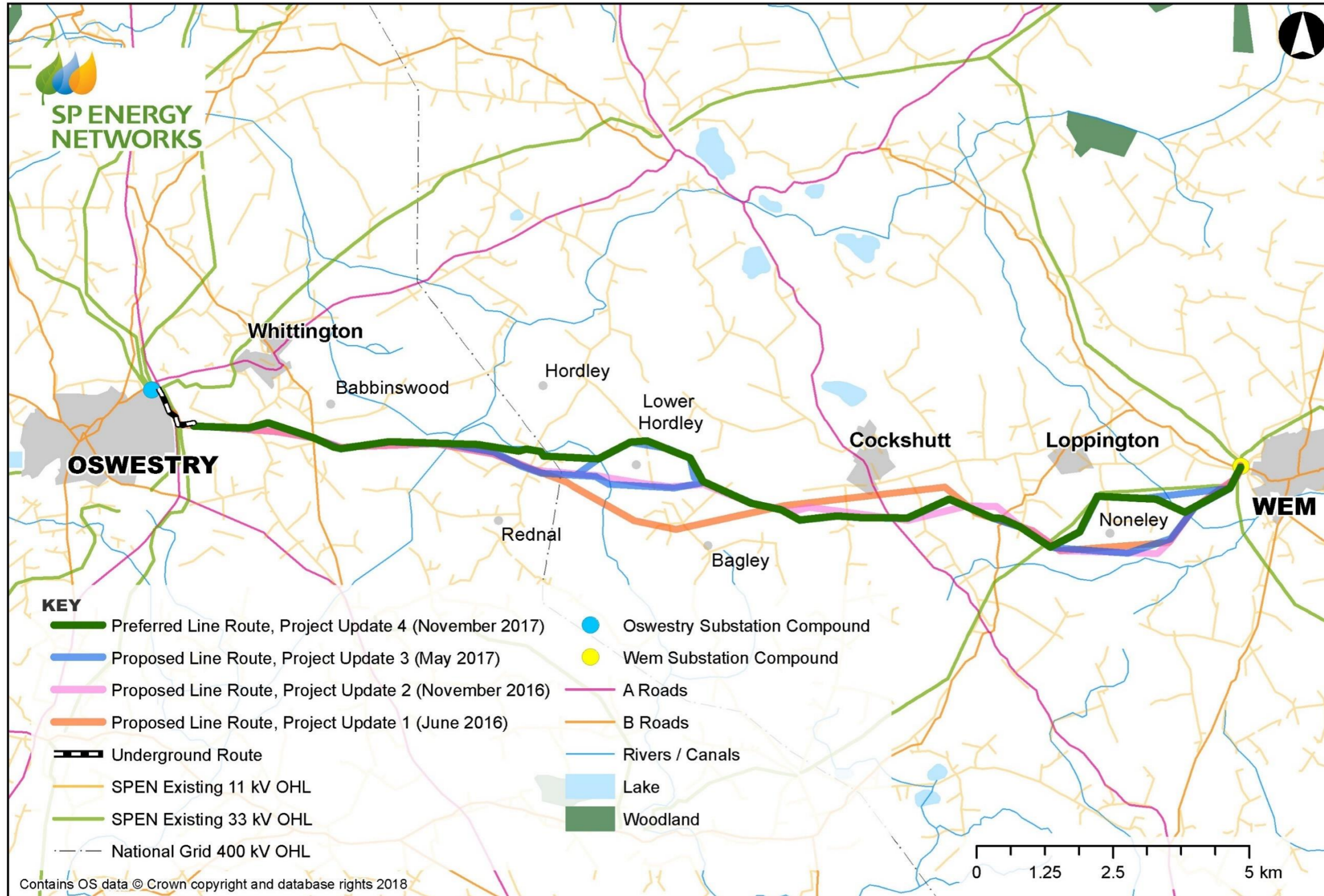


Figure 1-4 – Plan as presented in Project Update 4 (published November 2017)

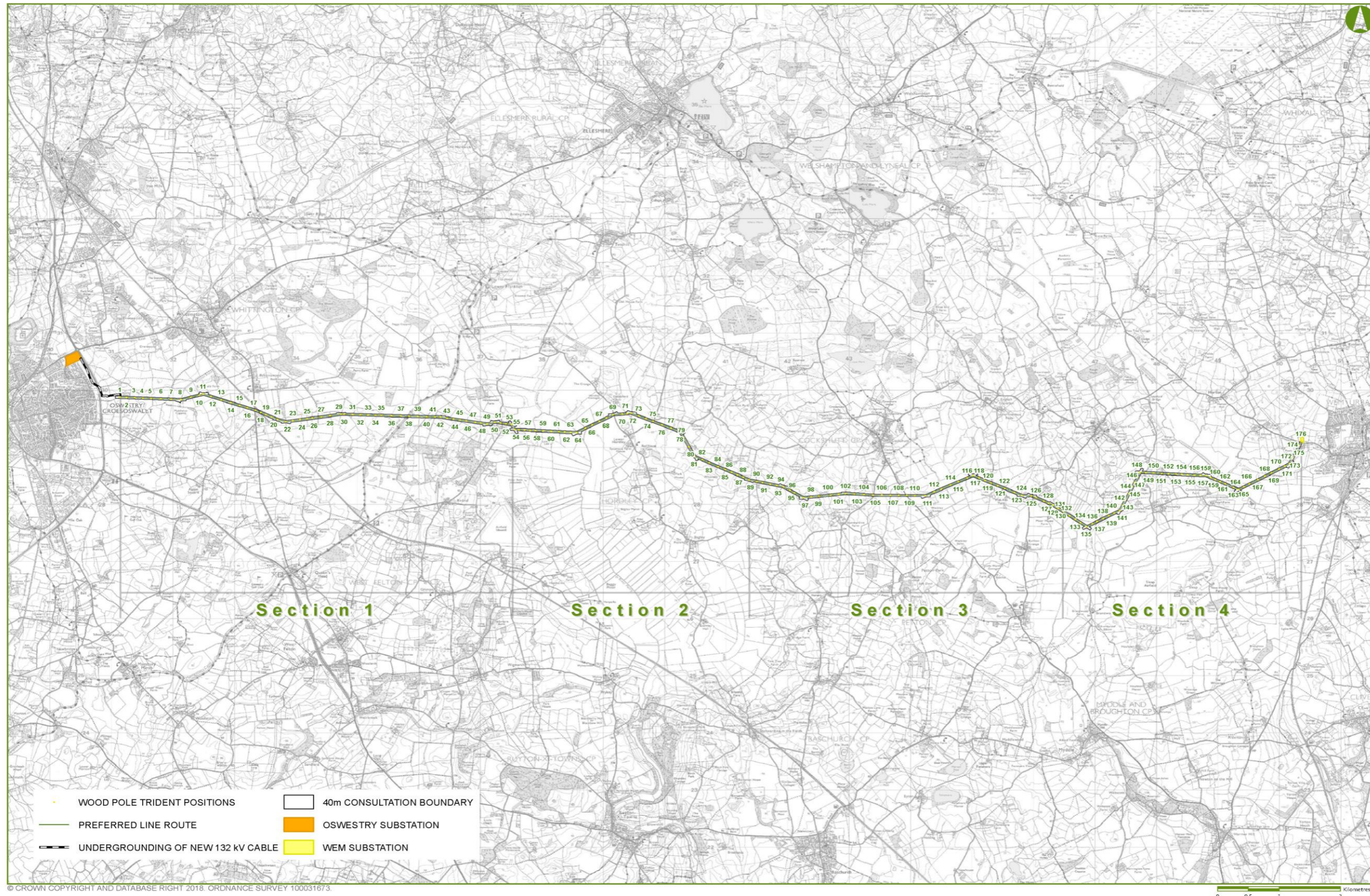




Figure 1-5 – Plan showing changes to the proposed development as a result of statutory consultation

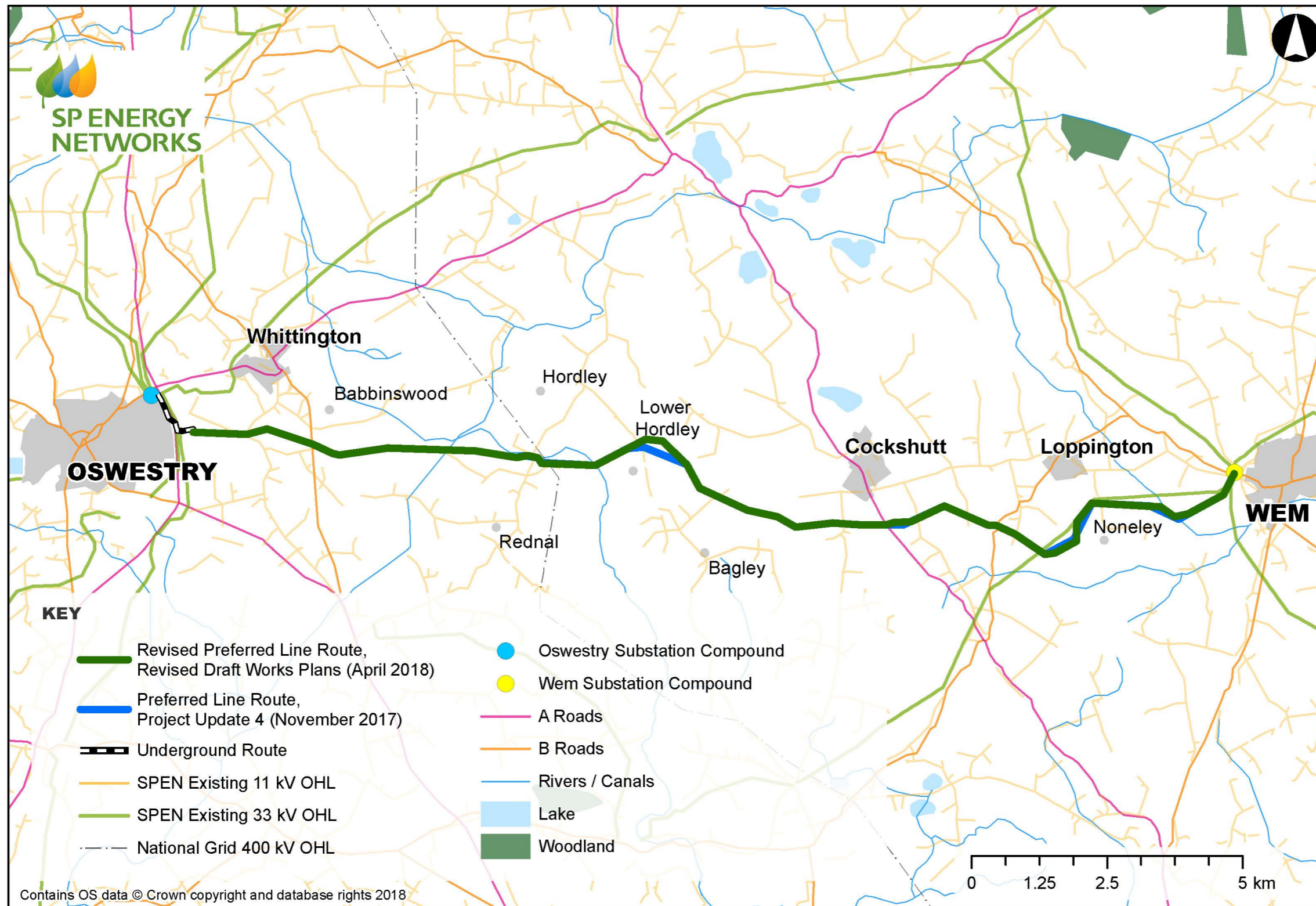


Figure 9-1 – Plan showing sections used to categorise comments at the statutory consultation

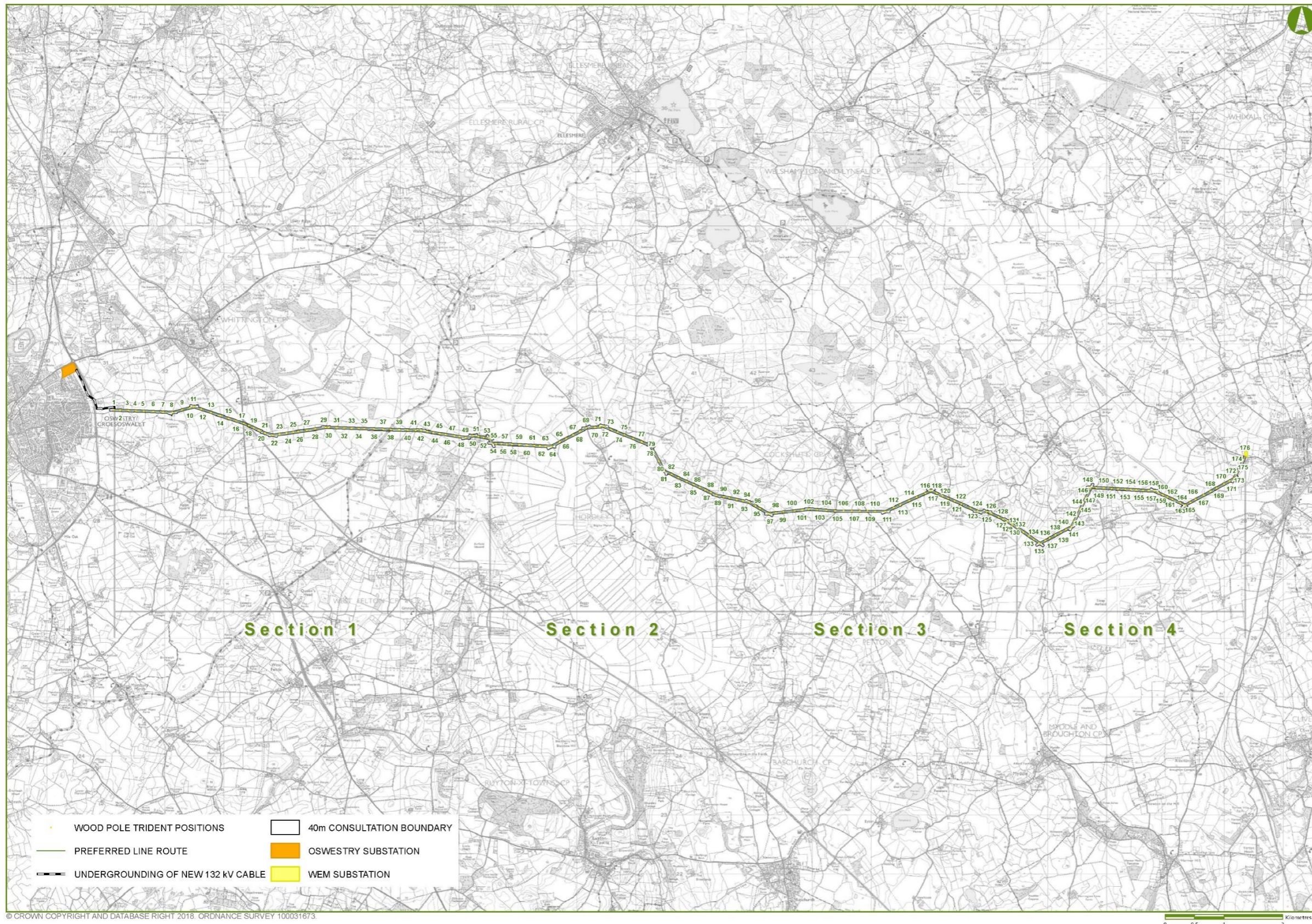
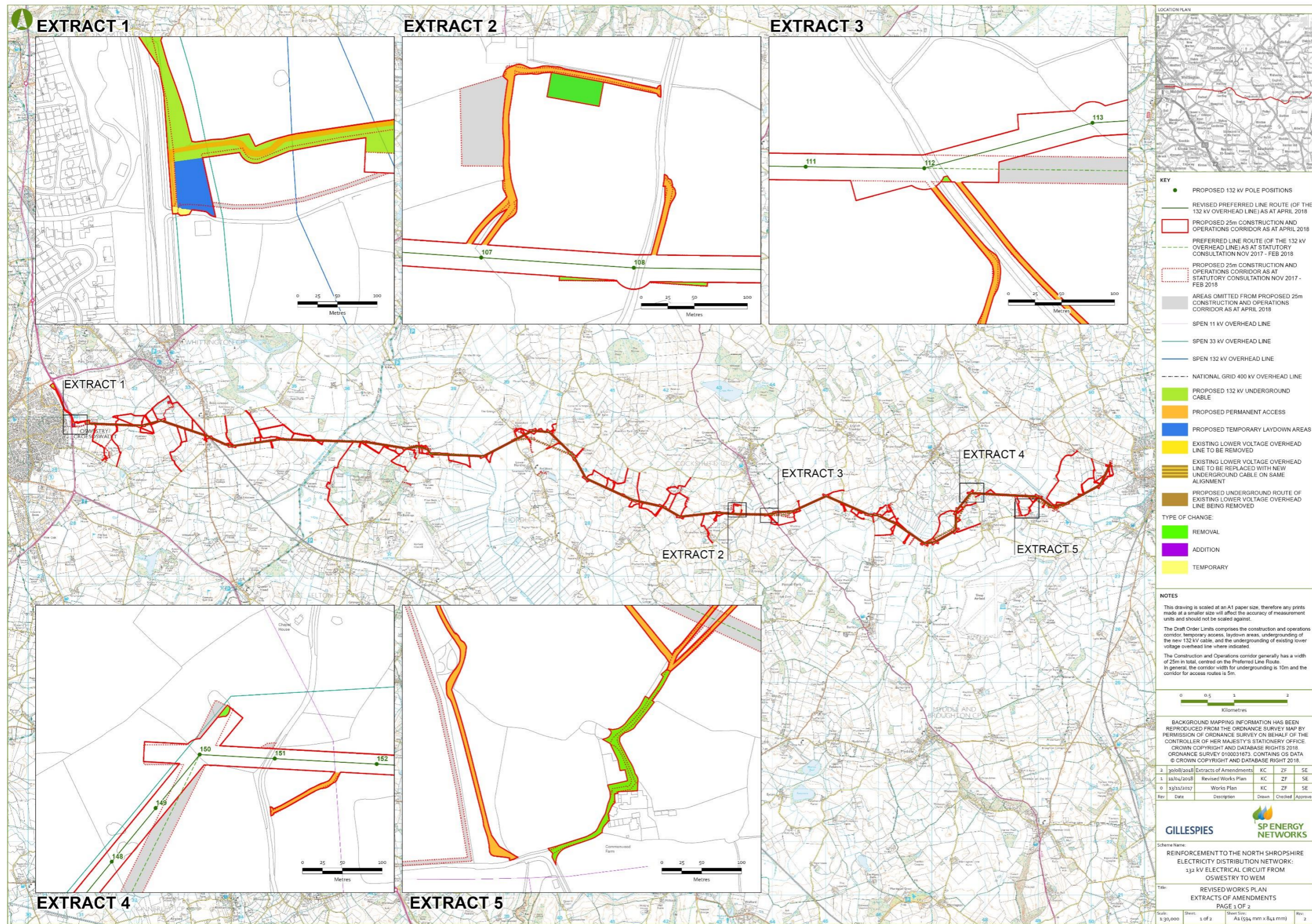
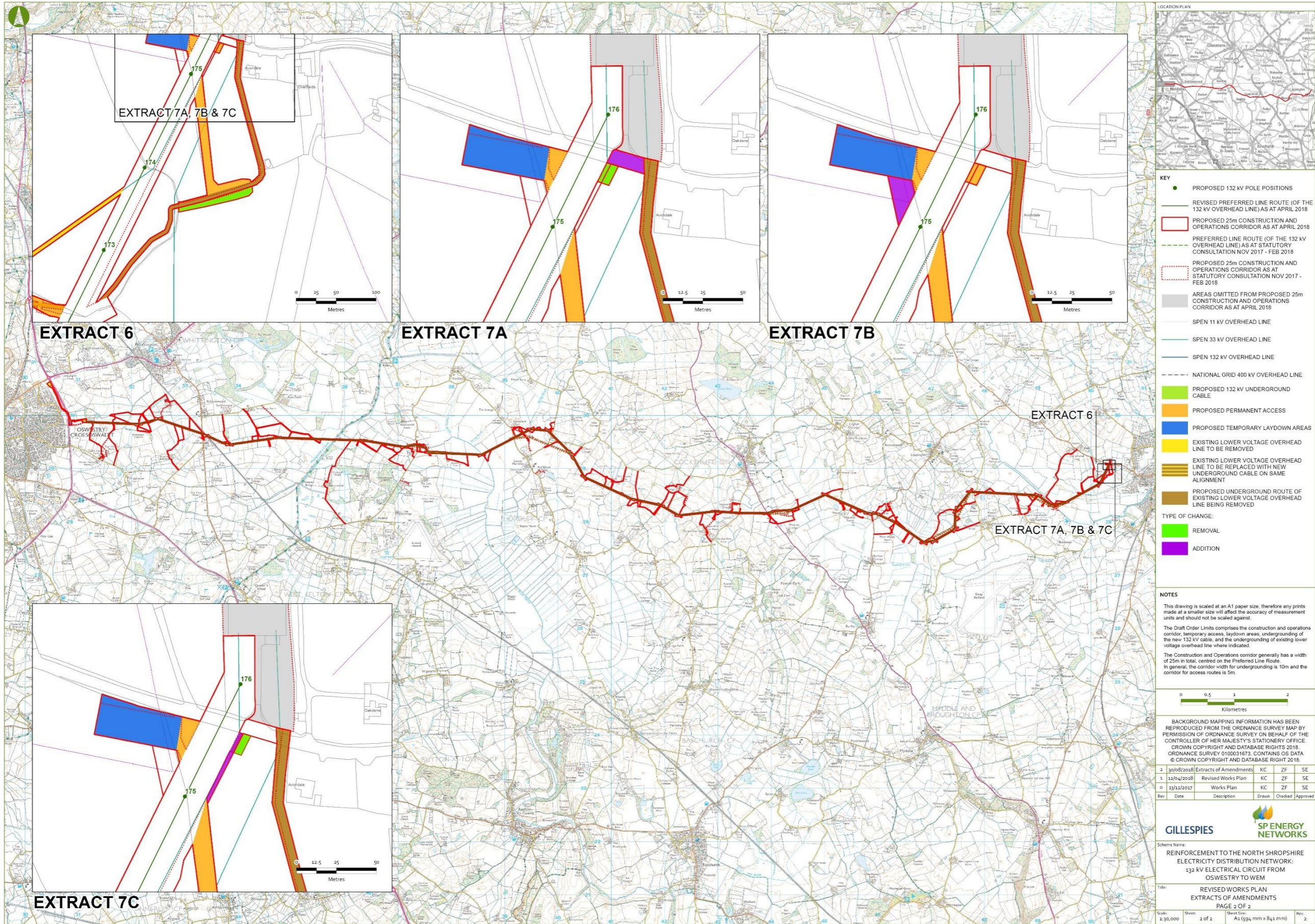


Figure 11-1 – Plan showing further changes to the proposed development (published November 2018)



Document Path: R:\P10787-00\001 NSRP Dec 2018\Figures\GIS\Layouts\Works Plans\P10787\_021\_NSRP\_Extracts from Amended Works Plan - Page 1.mxd



- KEY**
- PROPOSED 132 kV POLE POSITIONS
  - REVISED PREFERRED LINE ROUTE (OF THE 132 kV OVERHEAD LINE) AS AT APRIL 2018
  - PROPOSED 25m CONSTRUCTION AND OPERATIONS CORRIDOR AS AT APRIL 2018
  - PREFERRED LINE ROUTE (OF THE 132 kV OVERHEAD LINE) AS AT STATUTORY CONSULTATION NOV 2017 - FEB 2018
  - PROPOSED 25m CONSTRUCTION AND OPERATIONS CORRIDOR AS AT STATUTORY CONSULTATION NOV 2017 - FEB 2018
  - AREAS OMITTED FROM PROPOSED 25m CONSTRUCTION AND OPERATIONS CORRIDOR AS AT APRIL 2018
  - SPEN 11 kV OVERHEAD LINE
  - SPEN 33 kV OVERHEAD LINE
  - SPEN 132 kV OVERHEAD LINE
  - NATIONAL GRID 400 kV OVERHEAD LINE
  - PROPOSED 132 kV UNDERGROUND CABLE
  - PROPOSED PERMANENT ACCESS
  - PROPOSED TEMPORARY LAYDOWN AREAS
  - EXISTING LOWER VOLTAGE OVERHEAD LINE TO BE REMOVED
  - EXISTING LOWER VOLTAGE OVERHEAD LINE TO BE REPLACED WITH NEW UNDERGROUND CABLE ON SAME ALIGNMENT
  - PROPOSED UNDERGROUND ROUTE OF EXISTING LOWER VOLTAGE OVERHEAD LINE BEING REMOVED
- TYPE OF CHANGE:**
- REMOVAL
  - ADDITION

**NOTES**

This drawing is scaled at an A1 paper size, therefore any prints made at a smaller size will affect the accuracy of measurement units and should not be scaled against.

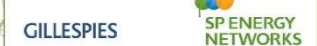
The Draft Order Limits comprises the construction and operations corridor, temporary access, laydown areas, undergrounding of the new 132 kV cables, and the undergrounding of existing lower voltage overhead line where indicated.

The Construction and Operations corridor generally has a width of 25m in total, centred on the Preferred Line Route. In general, the corridor width for undergrounding is 10m and the corridor for access routes is 5m.



BACKGROUND MAPPING INFORMATION HAS BEEN REPRODUCED FROM THE ORDNANCE SURVEY MAP BY PERMISSION OF ORDNANCE SURVEY ON BEHALF OF THE CONTROLLER OF HER MAJESTY'S STATIONERY OFFICE. CROWN COPYRIGHT AND DATABASE RIGHTS 2018. ORDNANCE SURVEY 0100031873. CONTAINS OS DATA © CROWN COPYRIGHT AND DATABASE RIGHT 2018.

2	30/08/2018	Extracts of Amendments	KC	ZF	SE
1	11/04/2018	Revised Works Plan	KC	ZF	SE
0	13/11/2017	Works Plan	KC	ZF	SE
Rev	Date	Description	Drawn	Checked	Approved



Scheme Name:  
**REINFORCEMENT TO THE NORTH SHROPSHIRE ELECTRICITY DISTRIBUTION NETWORK: 132 kV ELECTRICAL CIRCUIT FROM OSWESTRY TO WEM**

Title:  
**REVISED WORKS PLAN EXTRACTS OF AMENDMENTS PAGE 2 OF 2**

Scale:	Sheet:	Sheet Size:	Rev:
1:30,000	2 of 2	A1 (594 mm x 841 mm)	2